

## JDH-16 USER MANUAL



## **1.Safety instructions**

Correct training is required. Personnel who are not properly trained are not allowed to operate the strapping machine. Incorrect operation may result in equipment damage or personal injury.

### **1.1 Battery operation**

\*Environmental protection

Please do not throw the used battery into the household garbage can or waste water bucket, please do not hit or burn the wasted battery.

\* Short circuit hazard

Do not store the batteries with other metal objects.

Please do not disassemble the batteries yourself and store them in a dry and frost-resistant room. The ambient temperature must not be higher than 50 degrees.

Do not charge used batteries and please replace them with new ones when they are damaged or unusable.

### **1.2 Eye injury hazards**

Please wear eye protection to prevent damage to your eyes when using this product.

### **1.3 Operation**

Please read the instructions carefully and train properly before use.

Persons who have not been properly trained are not permissible

to operate the baler, before tightening the straps, if the instructions are not followed or if the strapping is loaded unreasonably can lead to breakage of the strapping or machine failure. Do not put your hands on the binding area, the gluing area or the cutting area of the cutter until you are familiar with the baler. Place your hand on the binding area, the gluing area and the cutter cut-out.

#### **1.4 Friction welding area**

You should check the condition of the friction welding area and familiarise yourself with the control and adjustment of the friction time and tightening time. Irregular friction time may result in poor bonding and lead to serious damage, so please do not ship or transport boxes that have not been properly packed and handled.

#### **1.5 Packing straps distribution**

Please use the specially designed belt tray carriage to dispense the straps. When not in use, secure the end of the straps in the strapping fixing opening.

#### **1.6 Straps warning**

Do not use straps to drag or lift loads as this may result in damage to objects or personal injury.

#### **1.7 Hazards of straps breakage**

Improper operation; excessive tightened; not using the strapping as

required will cause the tension force to be lost or the strapping to break, which may eventually cause the box/cargoes to be damaged and the object to be broken, the operator to lose balance and fall, or the strapping machine and the strapping to fly rapidly into the operator's face together causing injury

■ **Note:**

\*If the load is packed with sharp edges please add edge protection.

\*Wrap the straps around the appropriate area to be strapped.

\*The operator should not be in the same straight line position as the strapping machine during tightening and friction to prevent the baler and the straps from tipping over into the operator's face. And remind or ask bystanders to stay away from the operating area during operation. Please also use the strapping with the recommended width and strength specifications, which will help to improve the quality and efficiency of the packaging, as unsuitable strapping may cause the strapping to break or the box to come loose during transportation.

### **1.8 Cutting straps**

When cutting the straps, please use the appropriate cutting tool and keep a safe distance from people, not in the same line as the straps and away from the loose direction of the strapping. Please use the tools specifically designed for cutting straps, no hammers,

pliers, axes, hacksaws etc.

### **1.9 Slip and fall hazards**

Please keep the strapping area clean and tidy, as untidy work areas can cause accidents and falls can occur if you do not land well or are unbalanced before tension, especially in small work areas such as stairwells. Try to keep your balance when handling. Both feet must be on a flat and firm surface at the same time. Do not operate the device when you are unwell or in a difficult physical condition.

Please note the precautions mentioned specifically for the work area.

### **1.10 Dangers of the baler**

- \*Good maintenance of the baler is very necessary.

- \*Check the baler parts regularly, if there is wear or damage, please do not continue to use the baler until the parts are replaced.

- \*Do not use the baler without the straps

- \*Do not modify the baler as this may cause personal injury.

## **2. Technical parameters**

### **2.1 Description of the baler**

The JDH-16 baler manufactured is strapped with pet or PP straps. Manually wrap the straps on the cargo or box. After the straps end is inserted into the baler, and the straps will be tightened manually,

then tool will seal and cut off the excess material belt.

## **2.2 Baler dimensions**

Length: 330MM

Width: 138MM

Height: 168MM

Weight: 2.75KG(without battery)

Battery weight: 460g

## **2.3 Strapping materials**

Straps material: PET (polyester) and PP (polypropylene) tape with flat or embossed surface.

Straps specifications: width 13-16MM, thickness 0.4-1.2MM. Please choose the appropriate size of straps according to the baler you buy.

## **2.4 Straps strength**

Stretching force: adjustable from 60 to 2100 N, maximum value is determined by the material of the straps.

Strap feeding in speed: 66 MM/S. Friction strength: approx. 75% of the strength value of the straps.

## **2.5 Working environment**

The ambient temperature for operation is 5-45°C, with an optimum working temperature of 15-25°C.

Use or store with care to protect against water and moisture.

### **3 Accessories**

■Note: Please use the attachments or accessories mentioned in the manual, the usage of other attachments may cause damage to the equipment or may cause person injury.

#### **3.1 Rechargeable portable baler**

As the baler uses nickel-cadmium (Nicc) nickel-metal hydride (NiMH) batteries, please purchase the batteries separately according to the following parameters.

Type:Lithium Battery Voltage:14.4V Capacity:3000MAH 10C.

#### **3.2 Battery charger**

Charger input voltage: AV100-245V. 50/60HZ

Output voltage: DC16.8V,3A

Charging time: about 75minutes.

#### **3.3 All tools are packed in cardboard**

#### **3.4 Each unit comes with a set of common toolkit**

### **4 Operations**

#### **4.1 Battery installation**

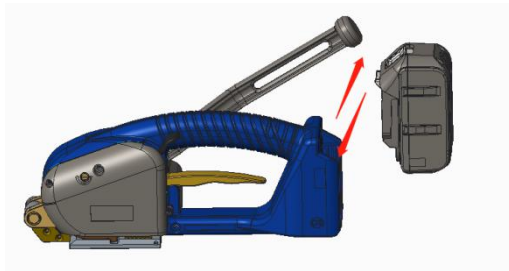
\*Do not leave baler batteries in the rain or water.

\*For safety reasons the battery is delivered uncharged and separated from the device, please follow the instructions for assembly.

\*Remove the battery by pressing the battery Clip Snap with your thumb and extracting it upwards or by releasing the Clip Snap after loading the battery.

\*The indicator light is red when the battery is low, the indicator light is red when charging, the charging indicator light is green when charging is complete.

#### *Battery disassembly diagram*



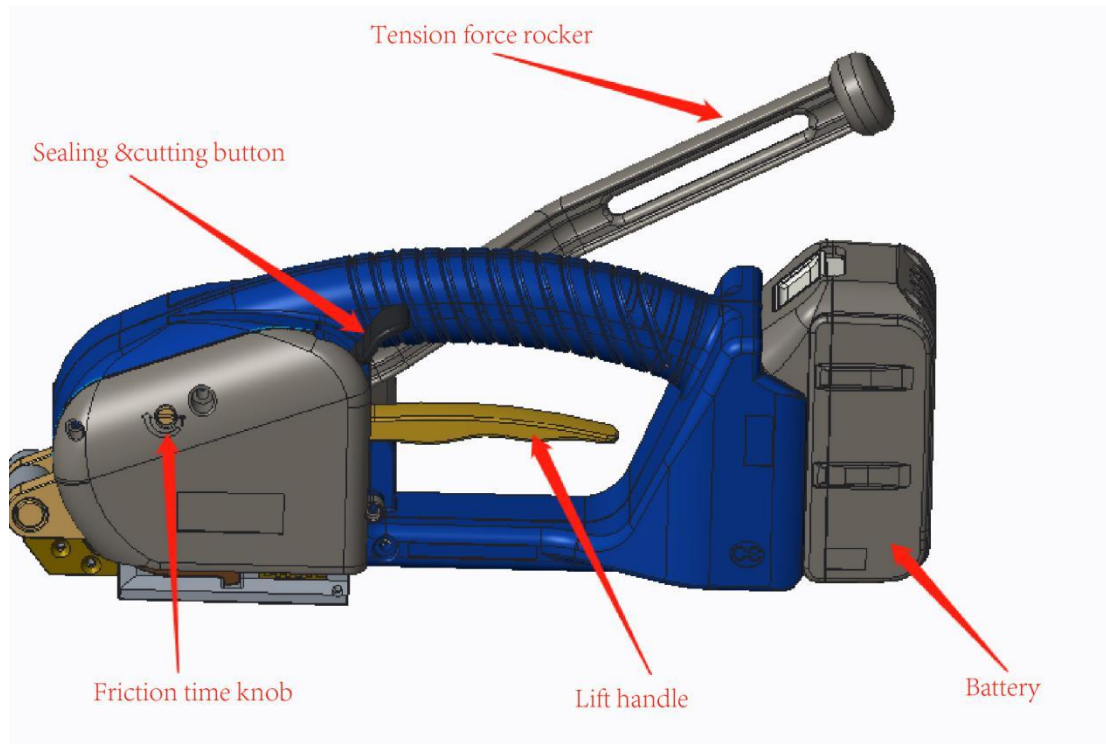
*Unload battery*



*Loading battery*

## **4.2 Operating elements**





### 4.3 Packing operations

Step 1 Wrap and stack the straps

Please wrap the strapping in the way as shown and do not allow the strapping to get wet with oil or other debris.



Step 2 inserts the straps into baler

When inserting the straps, the straps in the direction of tension must be stacked at the top end, the bottom straps should be stretched to the bottom of the binding wheel to cover the front of the tooth plate 5-10MM longer, when inserting the straps, please lift

the handle with your right hand, insert the straps with your left hand, the upper and lower ends of straps must be stacked parallel to each other after releasing the lift handle.



### Step 3 Tighten or feeding in the straps

After the strap is installed well, hold the baler handle in one hand, hold the tightening rocker in the other hand, while pulling the rocker backwards to the tail end limit mechanism, then push the tightening rocker forwards to the front section limit mechanism, repeat pulling the rocker backwards and forwards several times until the strap is tightened to the ideal state, then release the rocker. When tightening, keep the baler moving in parallel and the forward direction of the baler free of sundries.



### Step 4 Welding the straps

After pressing welding the button, the baler automatically seals and bonds straps(the time is preset by the system and can be increased or decreased clockwise or counterclockwise as required). The excess straps is automatically cutting off.

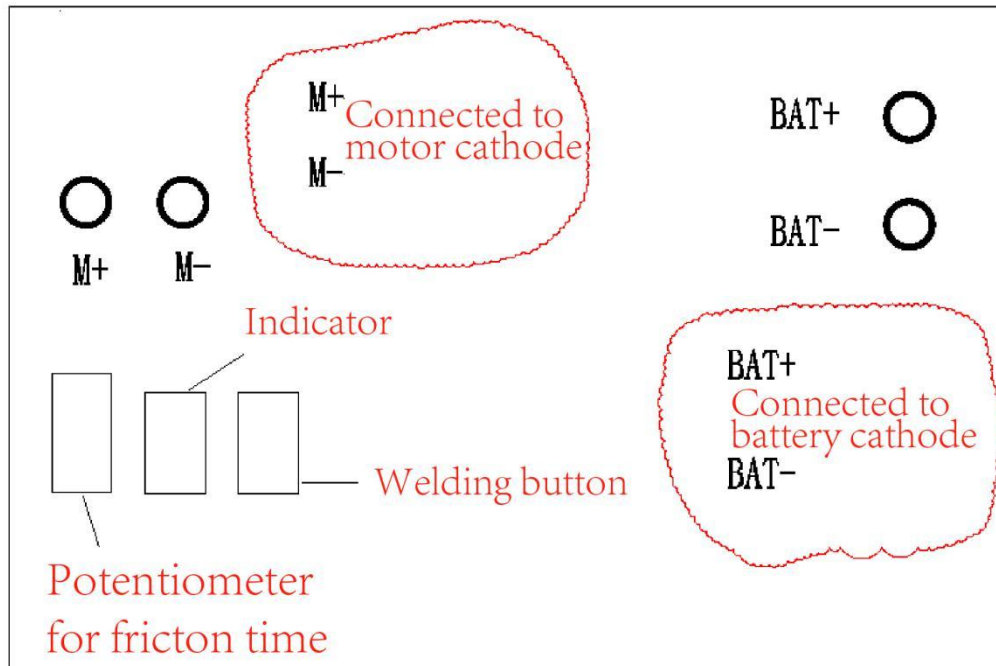


5 Move away balers

When the baling operation is complete ,lift the handle and move away the baler



## 5 Electrical connections



## 6 Bonding state adjustment

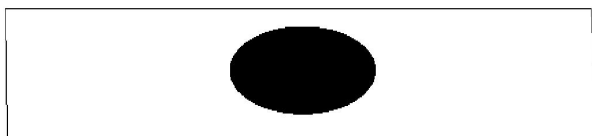
\*Friction time adjustment, as shown below, with a small one-word batch adjust the potentiometer knob, clockwise to increase the friction time, counterclockwise to reduce the friction time.



\*Reference to the following chart for bonding&welding time (effect) adjustment.



Perfect friction time



Friction time is too short



Friction time is too long

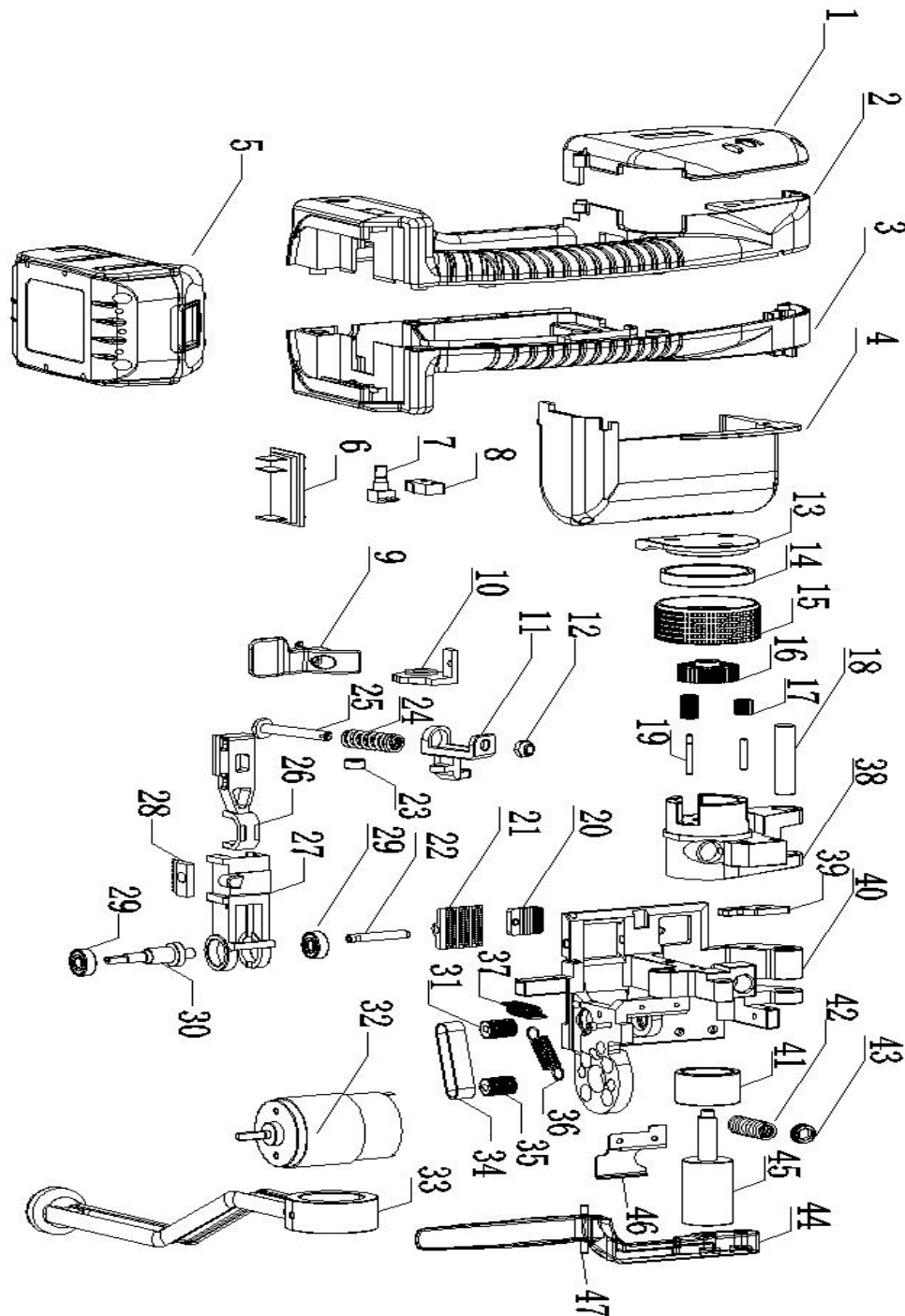
*Diagram of welding & bonding effect*

## **7 Common electrical faults**

In the process of using, the baler tool suddenly jammed and LED (JD-PSE-E003) shows red when the strap stuck in the tool can not be taken out, please immediately turn power off, cut the straps to remove the straps stuck in the tool, promptly charge the battery or replace the battery, when confirm that the battery has power and the fault has not been eliminated, you must open the left and right

plastic cover in the case of power failure, check the tool, check the switches or the wiring on each switch or motor has not fallen off, or replace the micro switch or replace the friction sealing motor.

## 8 Product exploded view and parts list





*Product breakdown diagram*

No.	Part name	Material Code	Qty.
1	Left side cover	JD-H16-S01	1
2	Left side housing	JD-H16-S02	1
3	Right side housing	JD-H16-S03	1
4	Right side cover	JD-H16-S04	1
5	Battery	JD-H16-E02	1
6	Battery connector	JD-H16-S05	1
7	Potentiometer	.	1
8	The micro switch	.	1
9	Welding handle	JD-H16-12	1
10	Holding down cam	JD-DB-022	1
11	Spring mounting groove	JD-H16-09	1
12	M6 Antis kid nut	.	1
13	Gear cover	JD-H16-04	1
14	Tighten the copper sleeve	JD-H16-08	2
15	Tightening wheel	JD-H16-03	1
16	Sun wheel	JD-H16-05	1
17	Planet gear	JD-H16-07	3
18	Front connecting pin	JD-H16-13	1
19	3.0 Gear fixing pin	JD-H16-15	3
20	Toothed plate	JD-DB-010	1
21	Lower friction part	JD-DB-029	1
22	5.0 Inner tooth pin	.	1
23	Cam rotor	JD-DB-017	1
24	Pressure spring	.	1
25	(M6) Flat head pin	JD-DB-003	1

No.	Part name	Material Code	Qty.
26	Upper friction part	JD-DB-023	1
27	Washboard cavity	JD-DB-024	1
28	Toothed knife	JD-DB-011	1
29	606 Bearing	.	2
30	Eccentric shaft	JD-DB-005	1
31	Synchronous wheel	JD-DB-15-1	1
32	Electric machinery	JD-H16-E03	1
33	Tighten rocker	JD-H16-11	1
34	Synchronous belt	.	1
35	Synchronous wheel (A)	JD-DB-015	1
36	Drag spring (A)	.	1
37	Drag spring (B)	.	1
38	Gear cavity	JD-H16-02	1
39	Front limit block	JD-H16-17	1
40	Main chamber	JD-H16-01	1
41	FC25 Bearing	.	2
42	Spring for pressing strapping	.	1
43	Plug screw	.	1
44	Handle	JD-H16-10	1
45	Fastening shaft	JD-H16-06	1
46	Rocker block	JD-H16-18	1
47	Handle pin	JD-H16-19	1
48		.	

*Table 1: Comparison table of parts assembly*



<i>Item</i>	<i>Name</i>	
1	<i>A set of tool</i>	
2	<i>Charger</i>	
3	<i>Charger adapter</i>	
4	<i>Carton</i>	
5	<i>User manual</i>	
6	<i>Battery</i>	

*Table 2: List of other accessories*

## **9 After Sales Service**

### **9.1 Product warranty card**

Warranty period: one year from the date of purchase for the whole tool.

Warranty instruction: During the warranty period, for any fault caused by the quality problem of the product itself, the user can contact the dealer or our after-sales service personnel with a valid purchase certificate to enjoy the warranty service.

User information	Customer Name	
	Customer Address	
	Customer Phone	
Product information	Product type	
	Product number	
	Date of purchase	
	Where to buy	
	Purchase invoice number	
Dealer Information	Service outlets	
	Service calls	
	Free warranty period	12 months from the date of purchase (based on the date mark on the tool)

## 9.2 Description of the warranty

Note: The following situations are not covered by the product warranty

\*Damage caused by the user not operating the product in accordance with its instruction manual.

\*If the user uses, keeps or maintains the product improperly, drops it or damages it with water.

\*Failure /damage to the product caused by the use or replacement

of parts not supplied by our company.

\*Without a valid purchase invoice and warranty card, or if the purchase invoice is different from the machine model or Where the machine number does not match and where the purchase invoice has been altered.

\*Whole tool and parts that have exceeded the warranty period.

\*Cutting knives, timing belts, motors, PP housings/covers, supporting tools and other wear parts.

\*Damage caused by other force majeure such as natural disasters.

### **9.3 Notes**

1 This warranty card and a valid purchase invoice are important documents for the enjoyment of the product warranty service. Please keep it in a safe place.

2 Non-free warranty service range of products and services, the company's people are enthusiastic to provide you with a services for a fee.

3 Users in all regions of the country who need to purchase, repair or maintain the machine should call the company service

Hotline 0769-87287255/0769-87287355 or contact the company's sales and after-sales service person for help.

Email: [jdpack\\_sales01@163.com](mailto:jdpack_sales01@163.com)

[illegible]